

**NATIONAL
HEALTH
BOARD**

POARI HAUORA Ā-MOTU

A more unified health and disability system

NATIONAL HEALTH BOARD

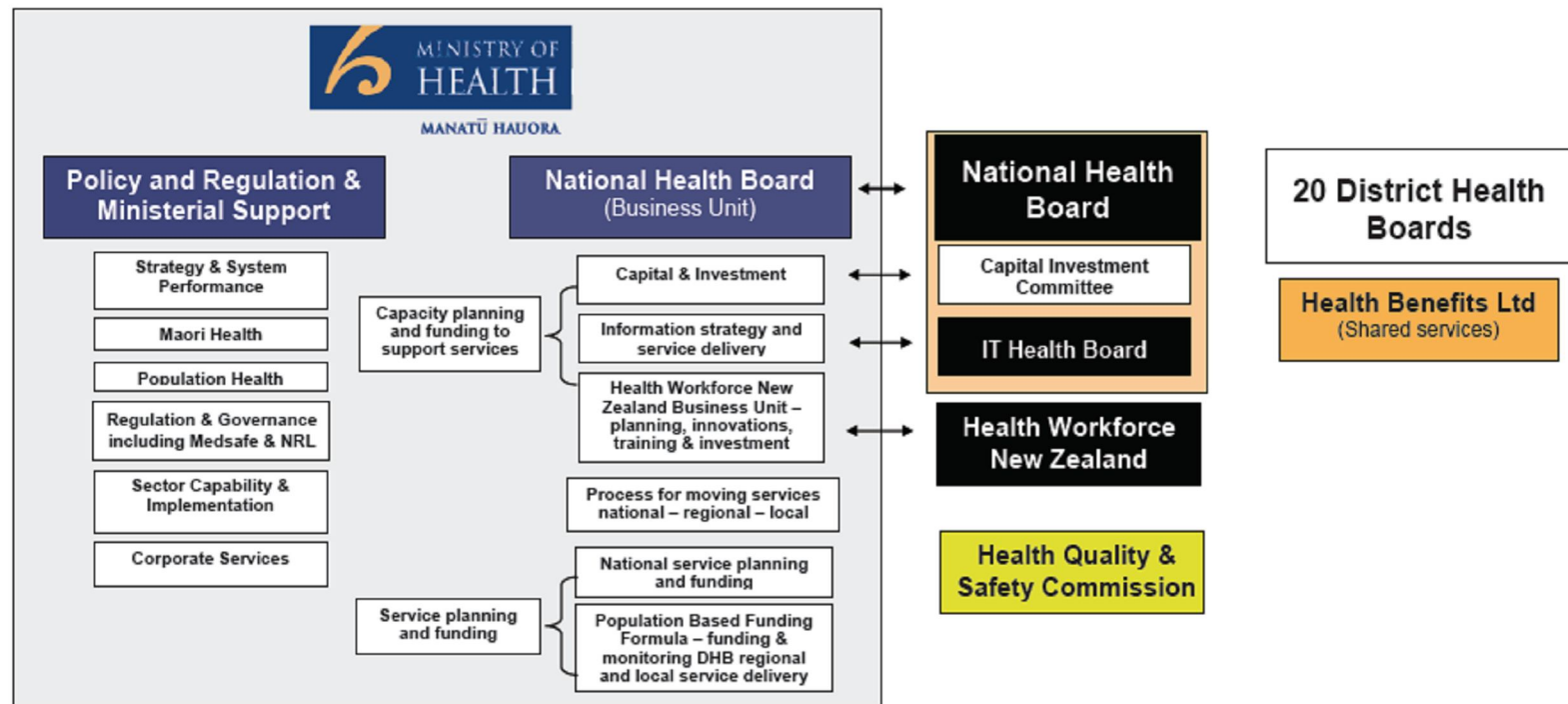
POARI HAUORA Ā-MOTU

- The National Health Board
 - to improve the quality, safety and sustainability of health care, for New Zealanders
 - a fresh focus, approach and culture to address challenges and drive improvements in frontline health care
 - a more unified health and disability system
 - Engaging clinicians and the wider health workforce in decision making

NATIONAL HEALTH BOARD

POARI HAUORA Ā-MOTU

MINISTER OF HEALTH



Eight Priorities for 2010/11

A unified system for service planning, funding and provision that is clinically and financially sustainable

National
Service
planning and
funding

Regional
Service
Plans

District Health
Board planning,
funding and
monitoring

Allocation of Ministry funding activity to national, regional or local level

Capacity planning and funding (IT, Workforce and Facilities)

Reducing bureaucracy to invest in front-line service

Encouraging clinical leadership and engagement

2010/11 year

- Long Term Health Service Plan
- National services established
- Regional plans in place
- Alignment of NHB, HWFNZ, NHITB, CIC
- Allocating Ministry NDE – nationally, regionally, locally
- Stronger monitoring of hospital efficiency
- Improved sector and clinical engagement