

Unleashing the power of data

To change lives

Health and Disability Forum

Phil Walker

Social data:

to understand and
monitor

- **structural drivers of change** (eg: ageing)
- **outcomes** (eg: health, standard of living, social connections and social cohesion)
- **Distributions and inequalities**
- **Pathways, transitions, cause and effect**

To help answer questions –

- Is life getting better or worse?
- What factors affect people's well being and how?
- Which groups in society are at most risk of disadvantage?
- What response might be possible by society and/or government?

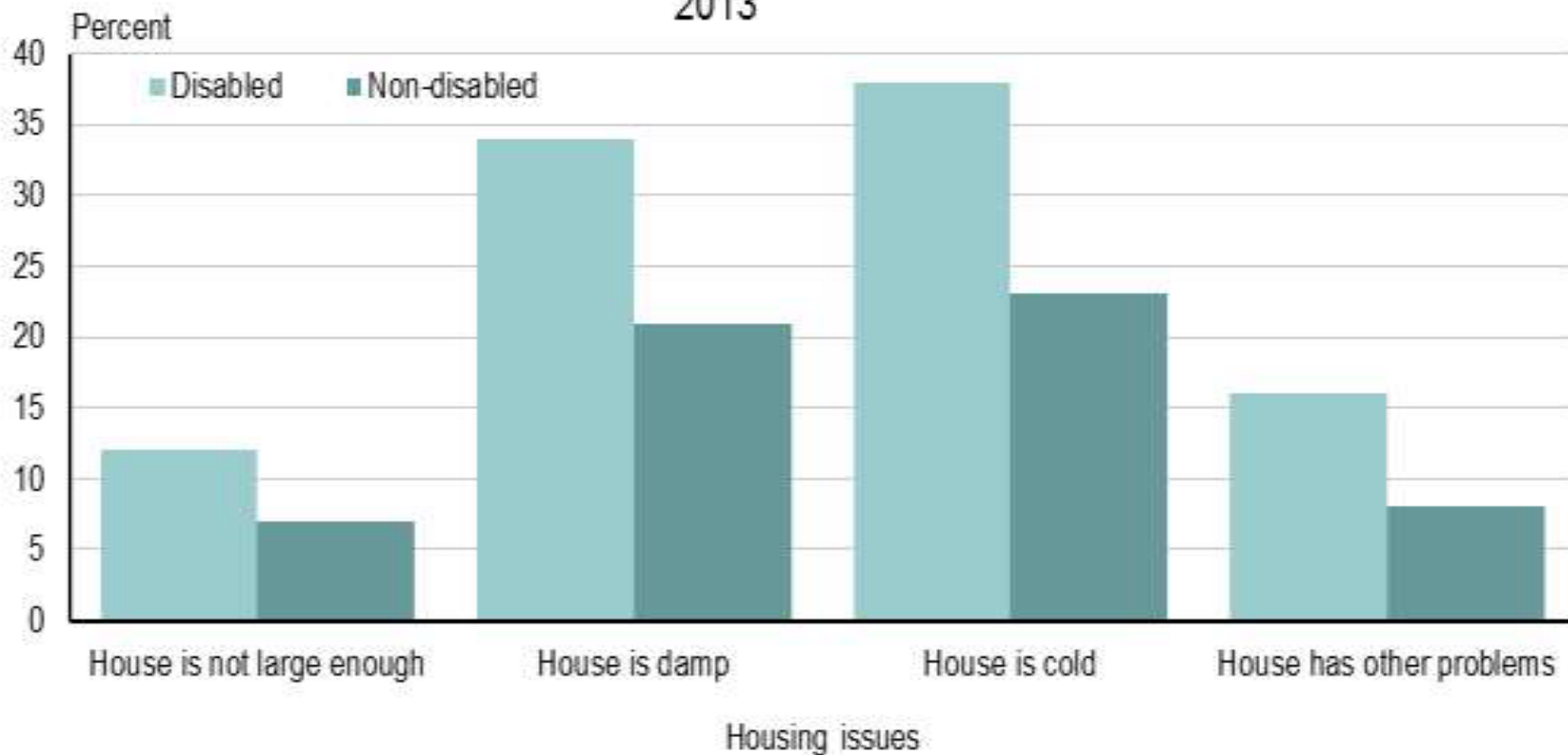
Multi Dimensional Well-being

- “Developments in one domain of quality of life affect other domains”
- “The consequences for quality of life of having multiple disadvantages far exceed the sum of their individual effects”

Stiglitz, Sen & Fitoussi, 2009.

NZ Disability Survey

Housing issues for Māori By disability status 2013



Source: Statistics New Zealand

Causal link mapping

Green= All 3 groups.
Blue= 2out of 3 groups

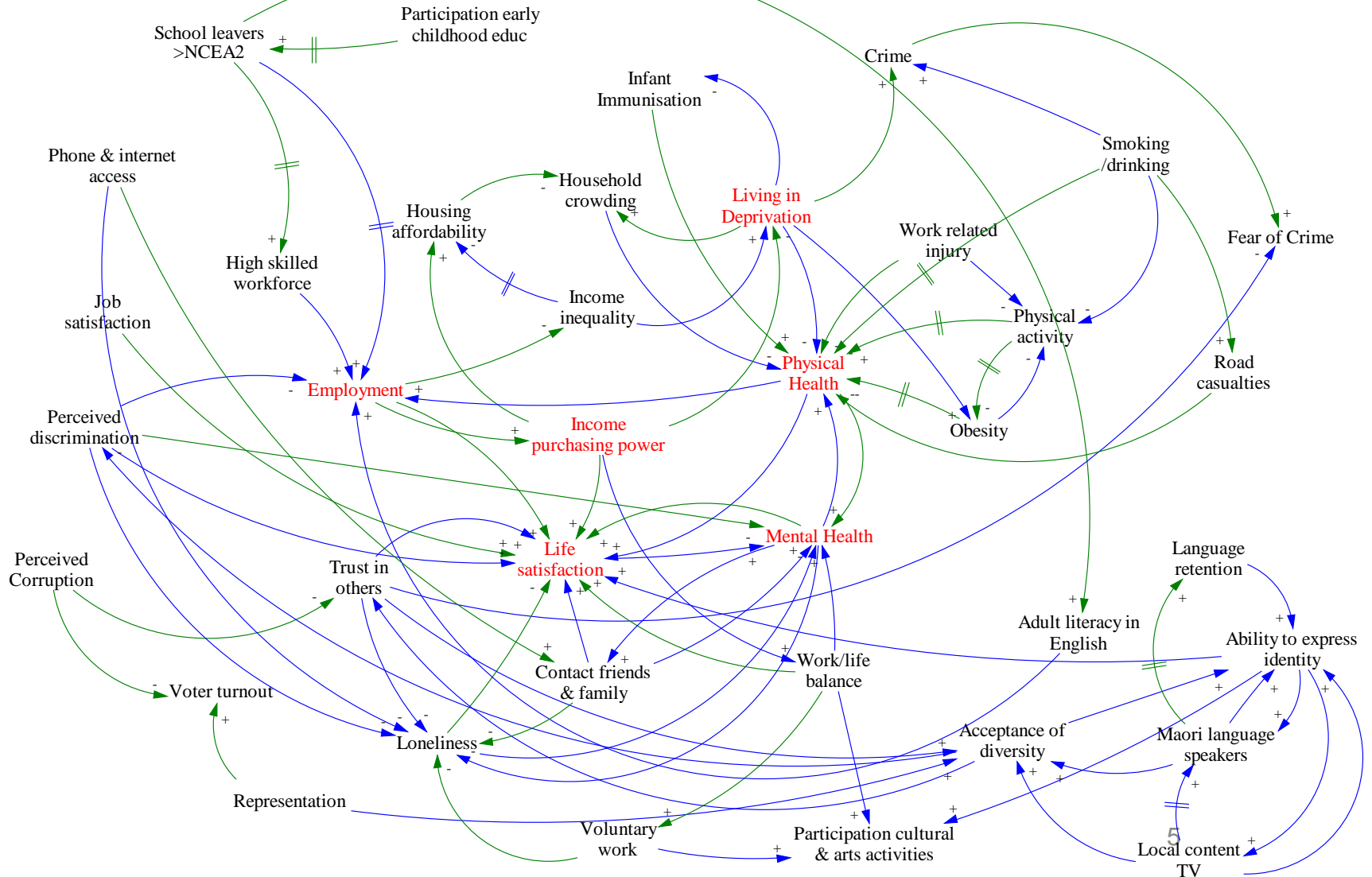
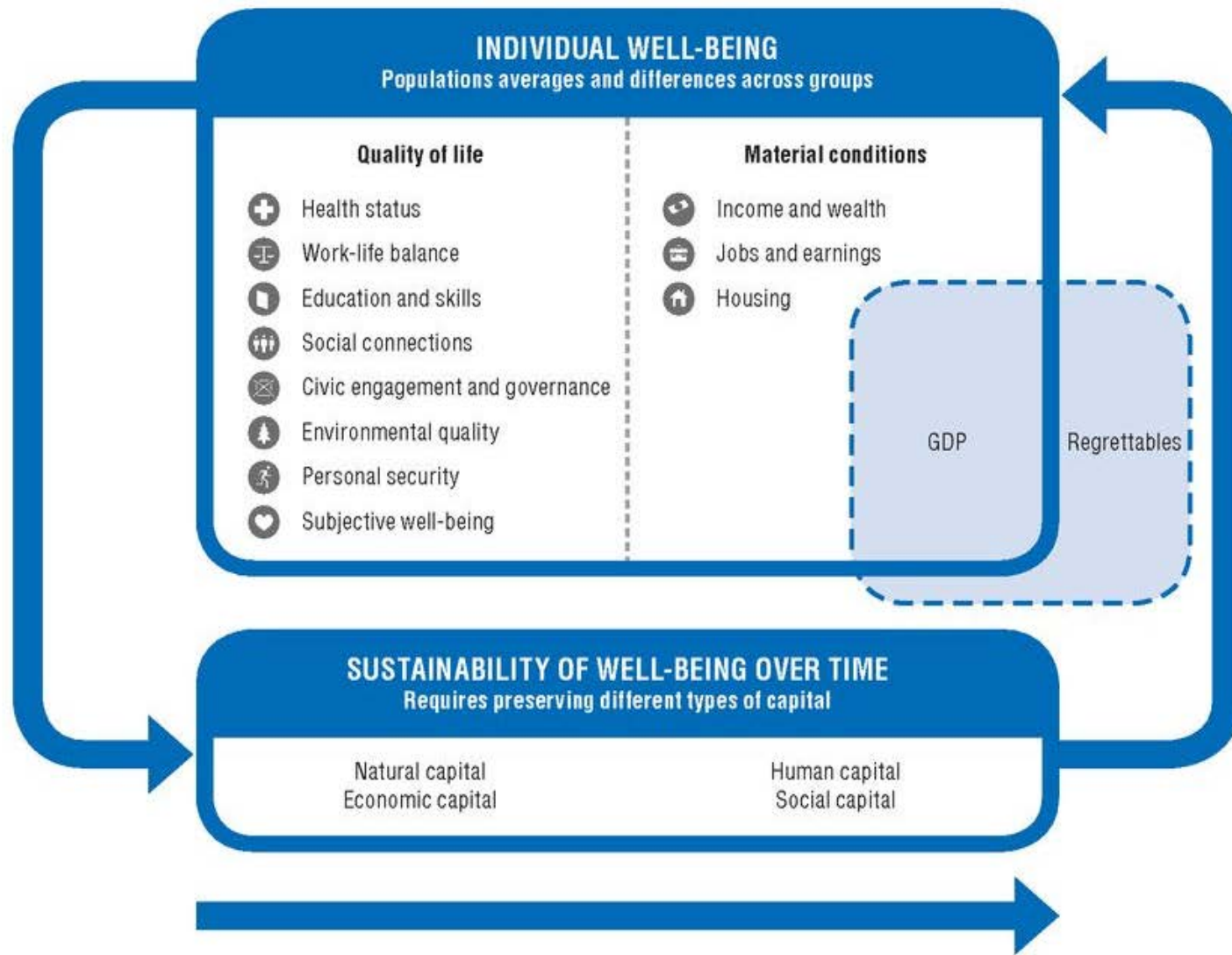


Figure 1.2. **The OECD well-being conceptual framework**



Source: OECD (2011), *How's Life?: Measuring Well-being*, OECD Publishing, Paris, <http://dx.doi.org/10.1787/9789264121164-en>.

Accommodating preference

'... live the lives that they themselves most value, and, importantly have reason to value.'

Stiglitz, Sen and Fitoussi, 2009

Determinants of wellbeing -

From NZ General Social Survey – among the general population

From Te Kupenga – Among Maori

1. Relationships

Health

Income

1. Health

Relationships

Income

Children in high risk households

- Of New Zealand children aged under 18 years:
 - ⊙ 6% live in high risk households (5+ risk factors)
 - ⊙ 19% live in medium risk households (3-4 risk factors)
 - ⊙ 45% live in low risk households 1-2 risk factors
 - ⊙ 30% live in no risk households (0 risk factors)

Trans-disciplinary multi dimensional responses to complex issues -

“No single agency alone can protect vulnerable children.

Nor can all the issues be addressed from one aspect only.

All the appropriate agencies work together with the child and family/whānau as a whole.”

Children's Action Plan <http://childrensactionplan.govt.nz/childrens-teams-2/>

Integrated Data:

integrated Data Infrastructure content May 2015



Education

- Early Childhood Education Providers
- Primary Education – From 2007
- Secondary Education – From 2004
- Tertiary Education – From 1994

Benefits

- Benefit Dynamics Data – From 1990
- Child benefit, and 2nd and 3rd tier benefit payments – From 1993

Student Loans and Allowances

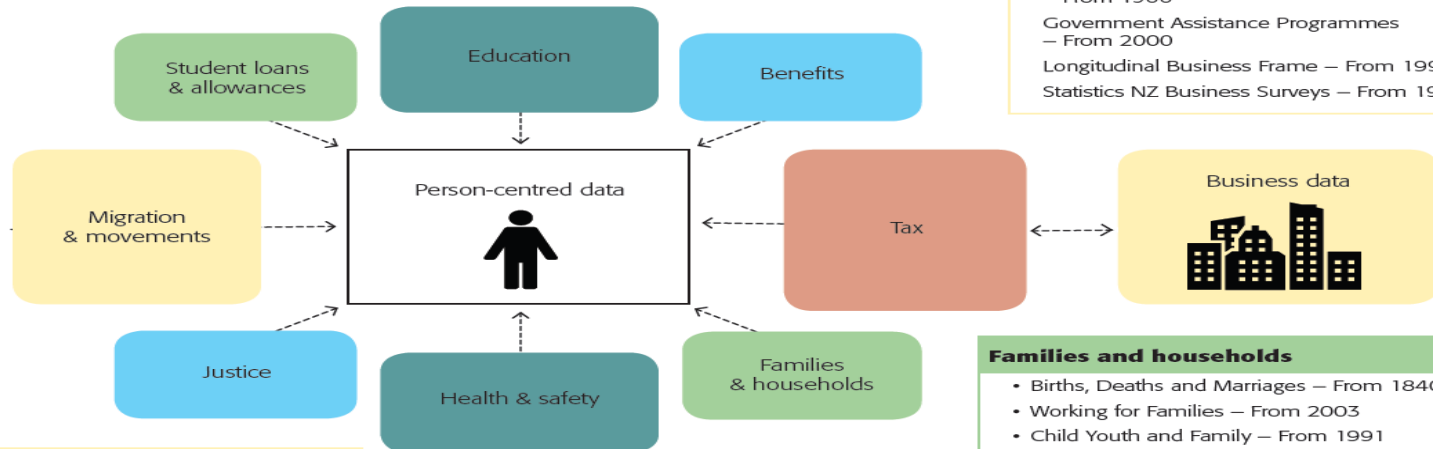
- From 1992

Personal tax

- EMS – From 1999
- IR3 – From 1997
- IR20 and IR45 – From 1995

Business Centred Business tax

- IR10 – From 1999
- IR4 – From 1999
- GST – From 1992
- Customs – Overseas merchandise trade – From 1988
- Government Assistance Programmes – From 2000
- Longitudinal Business Frame – From 1999
- Statistics NZ Business Surveys – From 1994



Migration and movement

- Border movements – From 1997
- Visa applications – From 1997
- Departure and Arrival cards – From 1997
- Longitudinal Immigration Survey of NZ – 2005-2009
- Migrant Survey – From 2012

Justice

- Charges – From 1992
- Sentencing – From 1998
- Victims – From 2014

Health and safety

- Population Cohort Demographics – From 2004
- NHI and PHO Addresses – From 2004 and 2005, respectively
- PHO Enrolments – From 2003
- Chronic Conditions – From 1945
- Cancer Registrations – From 1995
- Mortality – From 2002
- Pharmaceuticals – From 2005
- Publicly Funded Hospitals Discharges – From 1988
- NNAPAC – National Non-admitted Patient Collection – From 2007
- Lab and GMS Claims – From 2003 and 2002, respectively
- NIR – 2006 - 2013
- B4School checks – 2011 - 2013
- PRIMHD – 2008 - 2013

Families and households

- Births, Deaths and Marriages – From 1840
- Working for Families – From 2003
- Child Youth and Family – From 1991
- Tenancy – From 2000
- Household Labour Force and NZ Income Surveys – From 2006
- Survey of Family Income and Employment – 2002-2010

Census

- From 2013

ACC

- Claims and medical codes 1994 – 2015